

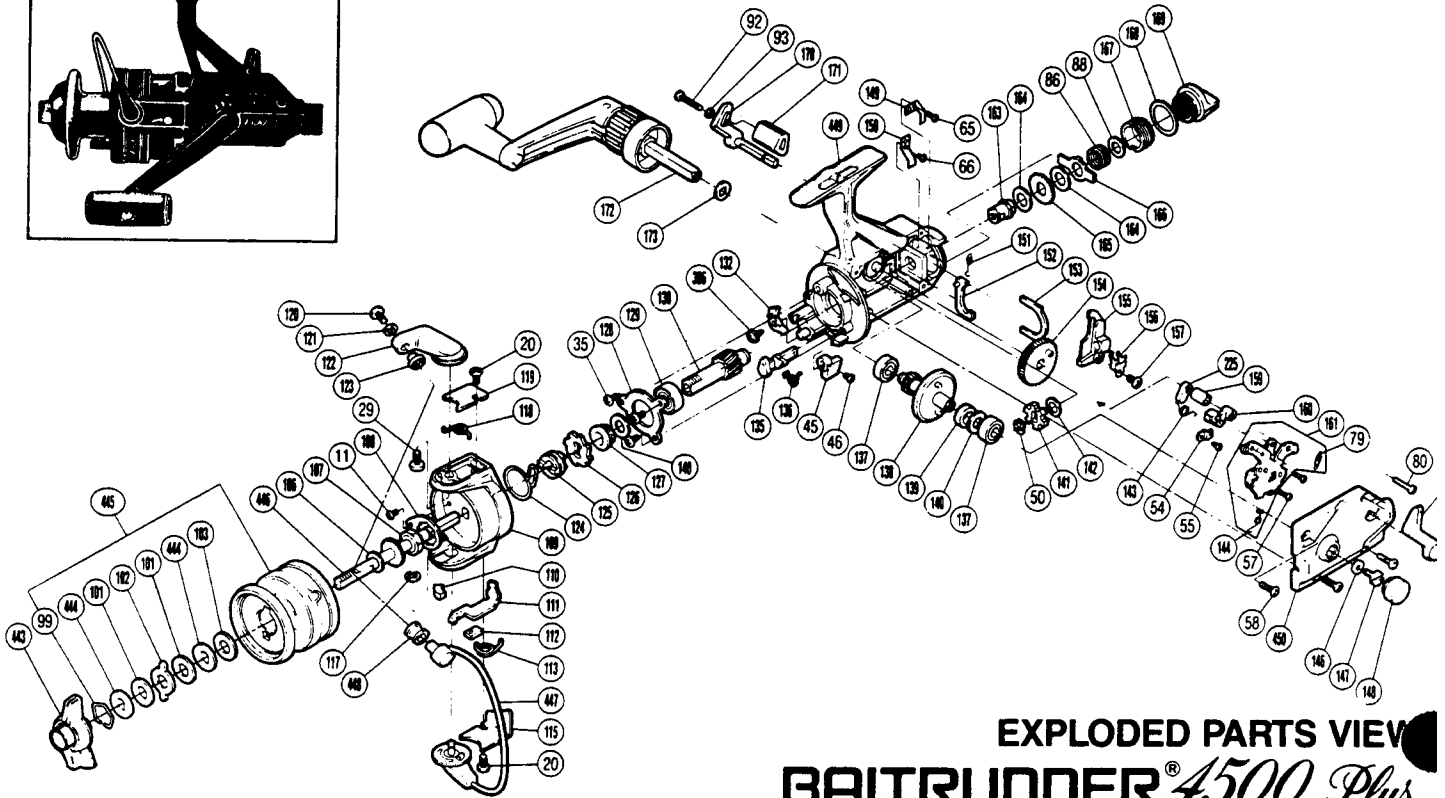
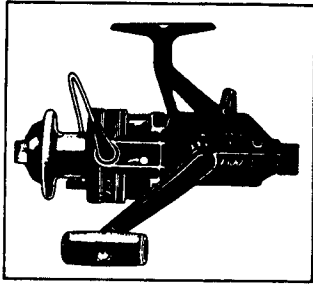
SHIMANO®

1987 REPAIR MANUAL

Shimano American Corporation, One Shimano Dr.
Irvine, CA 92718

TO ORDER:

This reel belongs to the "BaitRunner" series.
Please order parts using the abbreviation
"BR" and the part number.



EXPLODED PARTS VIEW BAITRUNNER® 4500 Plus

PARTS LIST

PART # DESCRIPTION

11.	Nut Lock Screw
20.	Bail Trip Cover Screw
29.	Bail Arm Screw
35.	Bearing Retainer Screw
45.	Anti-Reverse Lever
46.	Anti-Reverse Lever Screw
50.	"C" Lock
54.	Lever Shaft Retainer
55.	Shaft Retainer Screw
57.	Clutch Plate Screw
58.	Side Cover Screw A
65.	Dial Click Screw
66.	Pawl Guide Screw
79.	Baitrunner Click Spring
80.	Side Cover Screw B
86.	Free Spool Tension Spring
88.	Tension Spring Washer "B"
92.	Baitrunner Lever Screw
93.	Lock Washer
99.	Drag Washers Retainer
101.	Drag Washer 1
102.	Eared Washer
103.	Drag Washer 2
106.	Spool Washer
107.	Rotor Nut
108.	Rotor Nut Lock Plate
109.	Rotor
110.	Bail Trip Side Cam
111.	Bail Trip Lever
112.	Trip Lever Guide
113.	Lever Spring
115.	Bail Trip Cover

PART # DESCRIPTION

117.	"E" Lock
118.	Bail Spring
119.	Bail Spring Cover
120.	Line Roller Screw
121.	Lock Washer
122.	Bail Arm
123.	Line Roller Washer
124.	Anti-Reverse Pawl Spring
125.	Anti-Reverse Spring Holder
126.	Anti-Reverse Ratchet
127.	Pinion Spacer
128.	Bearing Retainer
129.	Ball Bearing
130.	Pinion Gear
132.	Anti-Reverse Pawl
135.	Anti-Reverse Cam
136.	Anti-Reverse Cam Spring
137.	Ball Bearing
138.	Drive Gear
139.	Drive Gear Spacer
140.	Drive Gear Washer
141.	Baitrunner Ratchet
142.	Ratchet Spacer
143.	Clutch Spring
144.	Clutch Pawl Spring
146.	Handle Lock Washer
147.	Handle Lock Screw
148.	Handle Screw Cap
149.	Dial Click
150.	Baitrunner Pawl Guide
151.	Baitrunner Pawl Spring

PART # DESCRIPTION

152.	Baitrunner Pawl
153.	Dial Retainer
154.	Oscillating Gear
155.	Oscillating Slider
156.	Oscillating Slider Retainer
157.	Slider Retainer Screw
159.	Clutch Cam Spacer
160.	Clutch Arm
161.	Clutch Plate Assembly
162.	Baitrunner Lever Arm (L)
163.	Free Spool Tension Shaft
164.	Free Spool Tension Washer
165.	Click Gear
166.	Eared Washer "BFS"
167.	Free Spool Tension Screw
168.	Dial Spacer
169.	Baitrunner Tension Dial
170.	Baitrunner Lever Arm (R)
171.	Baitrunner Lever Bridge
172.	Handle Assembly
173.	Handle Lock Spacer
225.	Clutch Cam
386.	Anti-Reverse Pawl Screw
443.	Fightin' Drag Knob
444.	Key Washer
445.	Spool Assembly
446.	Main Shaft
447.	Bail Assembly
448.	Sic Ceramic Roller
449.	Body
450.	Side Cover